

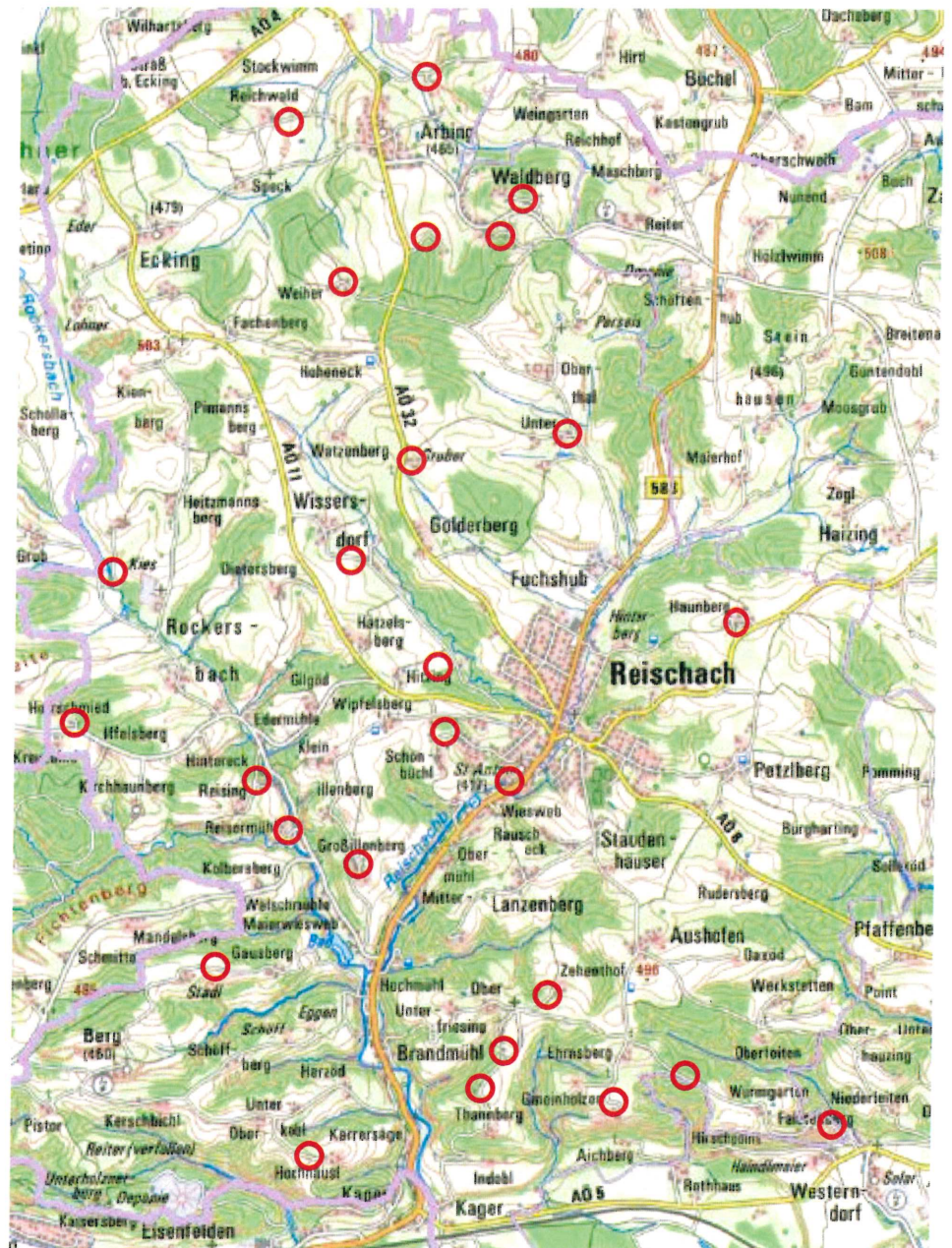
**Ländliche Entwicklung in Oberbayern
Verfahren Altöttinger Holzland
Gemeinde Reischach
Landkreis Altötting
B3-V7551**

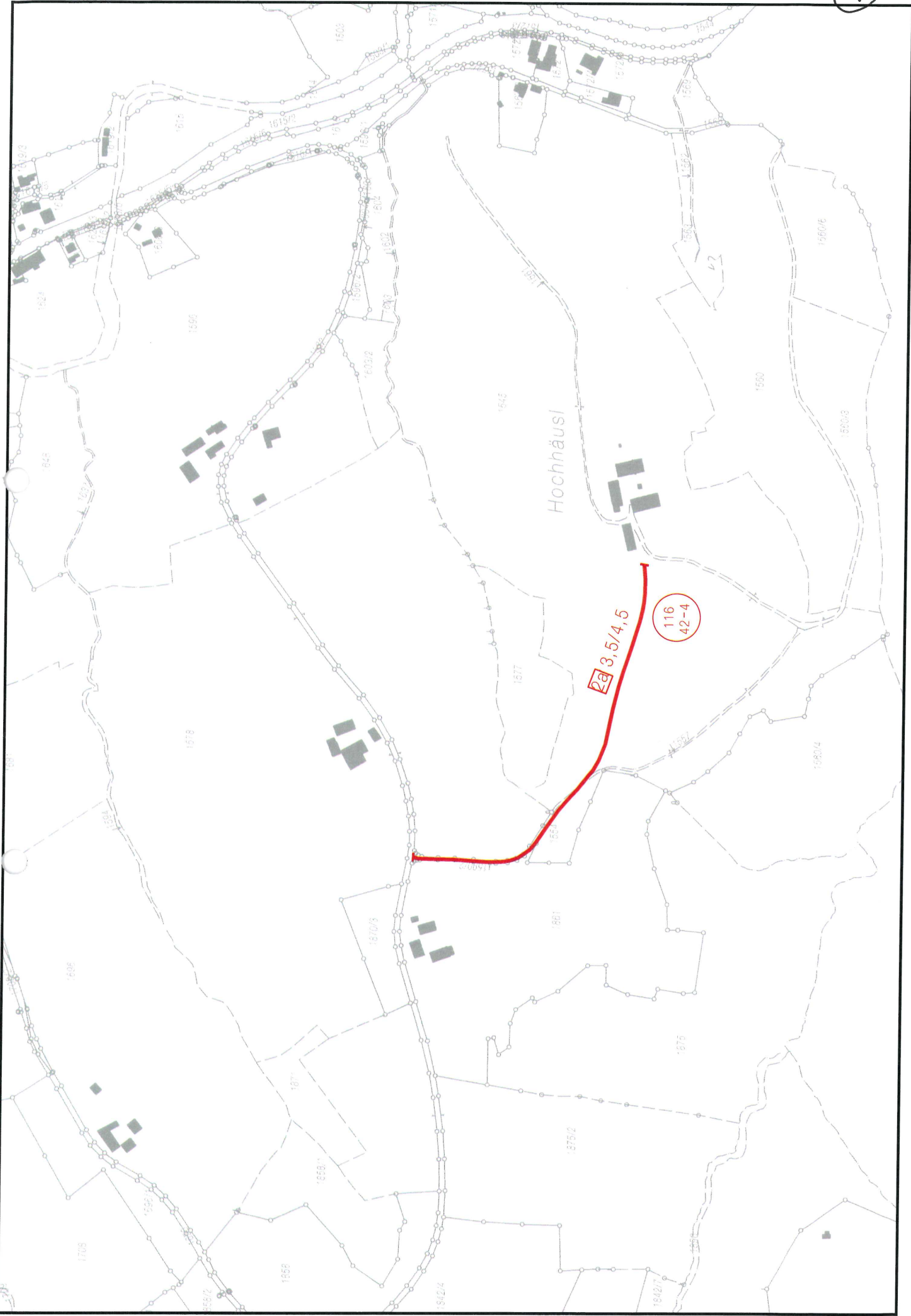
**Karte zum Plan über die gemeinschaftlichen und öffentlichen Anlagen
(Plan nach § 41 FlurbG)**

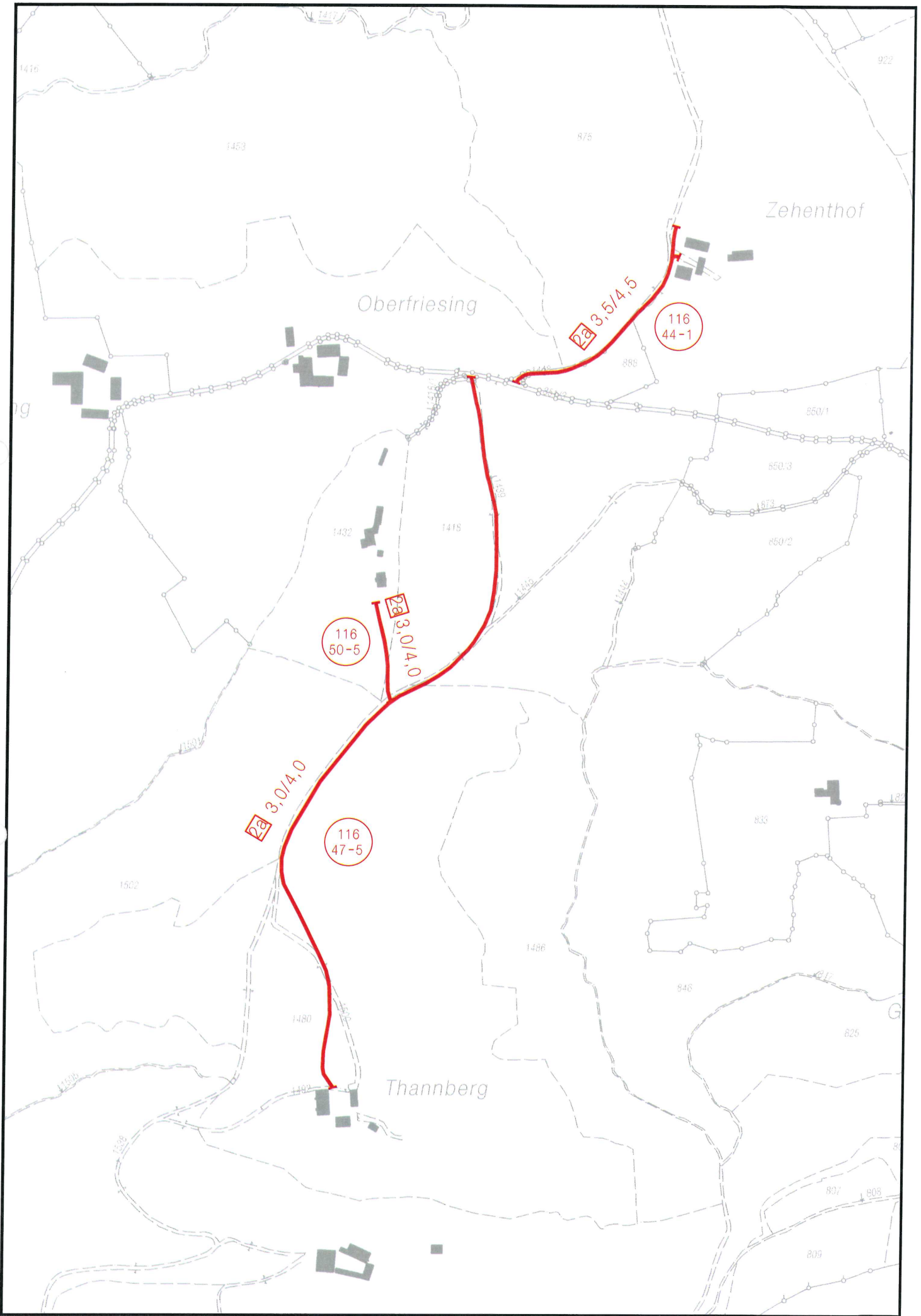
bestehend aus:

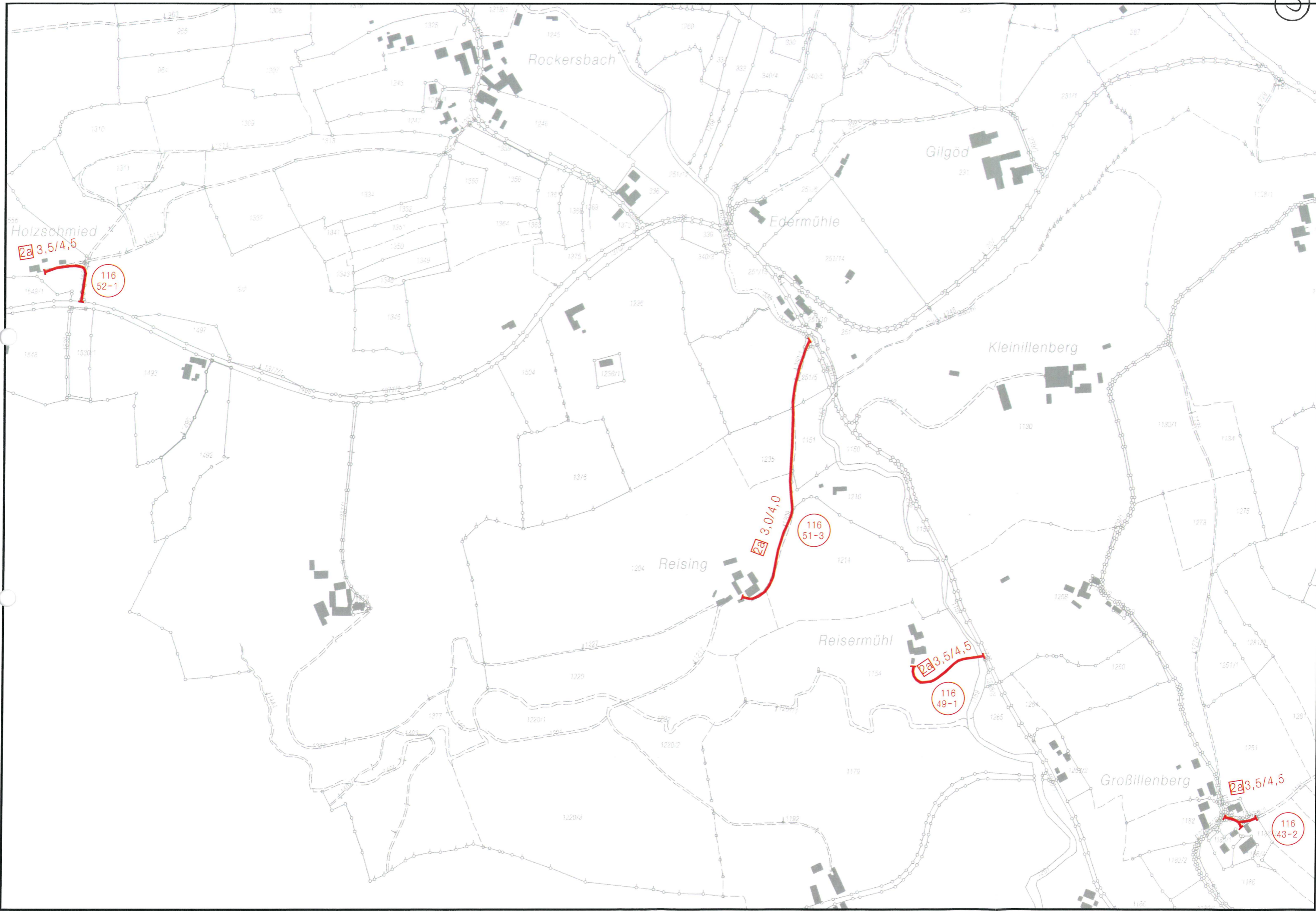
- Deckblatt mit Zeichenerklärung
- 13 Karten M = 1 : 5000

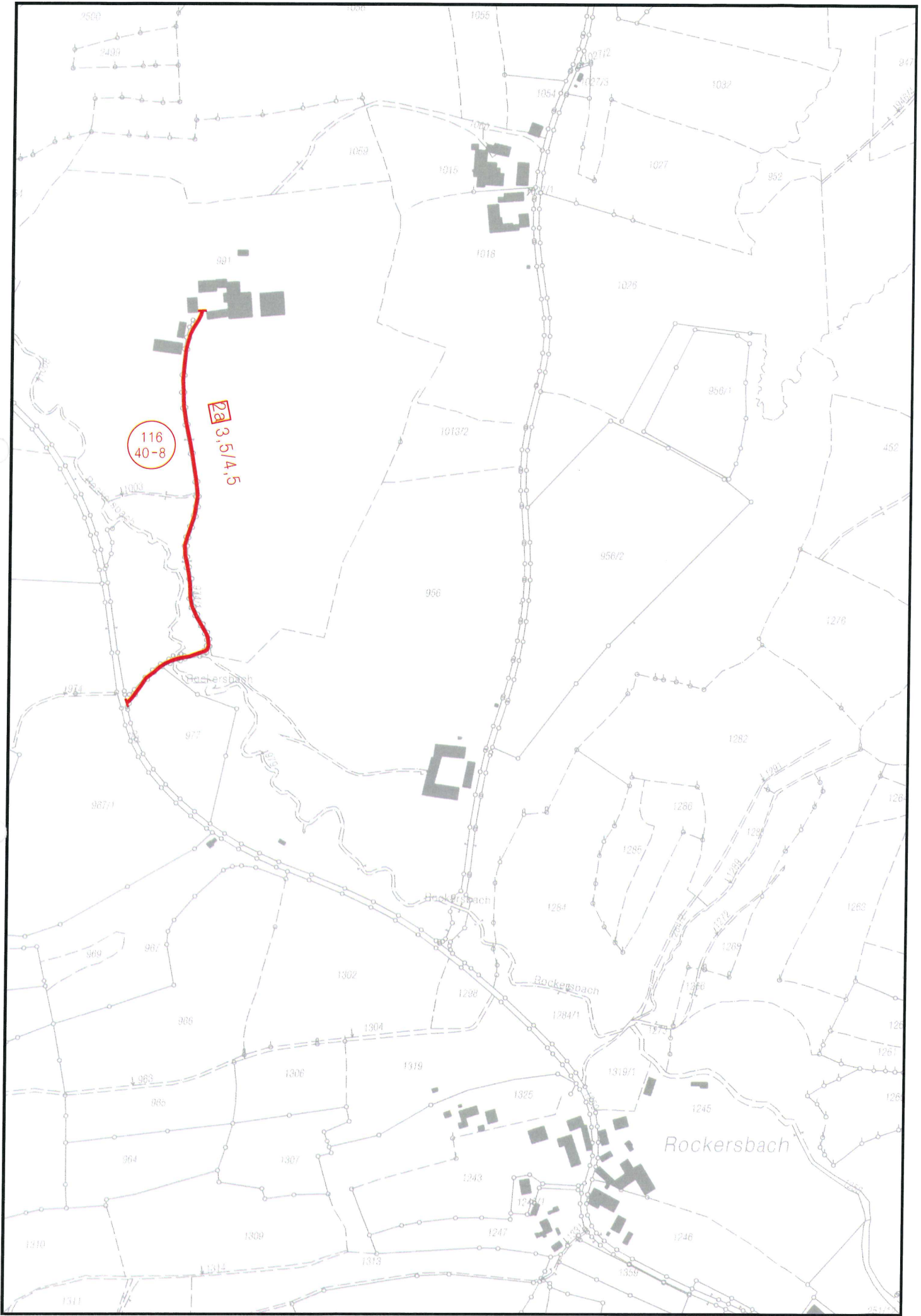
	Maßnahme Verkehr
	Weg/Straße (gepl.)
	Beginn und Ende der Anlage
	Decke ohne Bindemittel
	Fahrbahn- / Kronenbreite (m)
	Beseitigung bzw. Einziehung von Anlagen

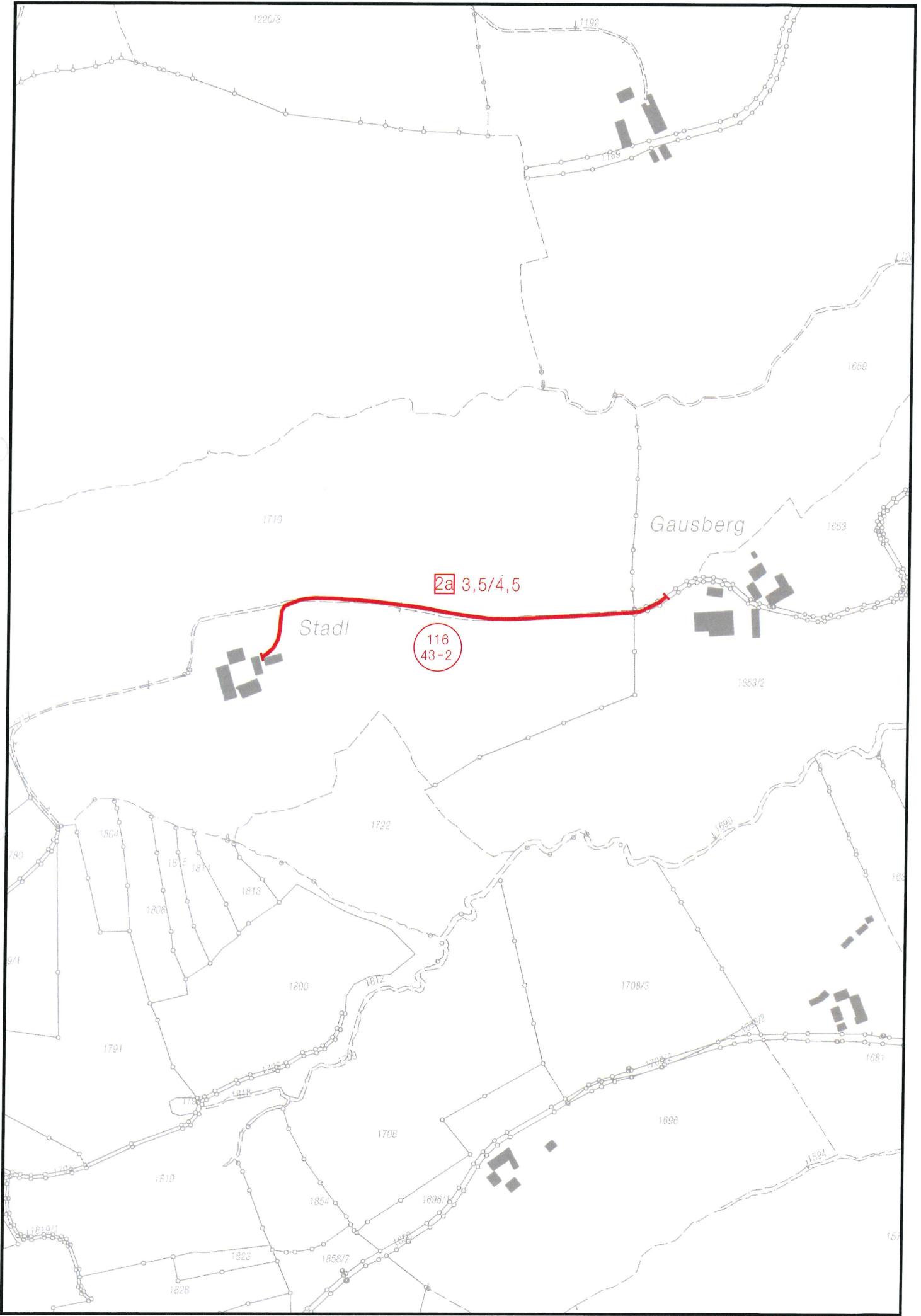




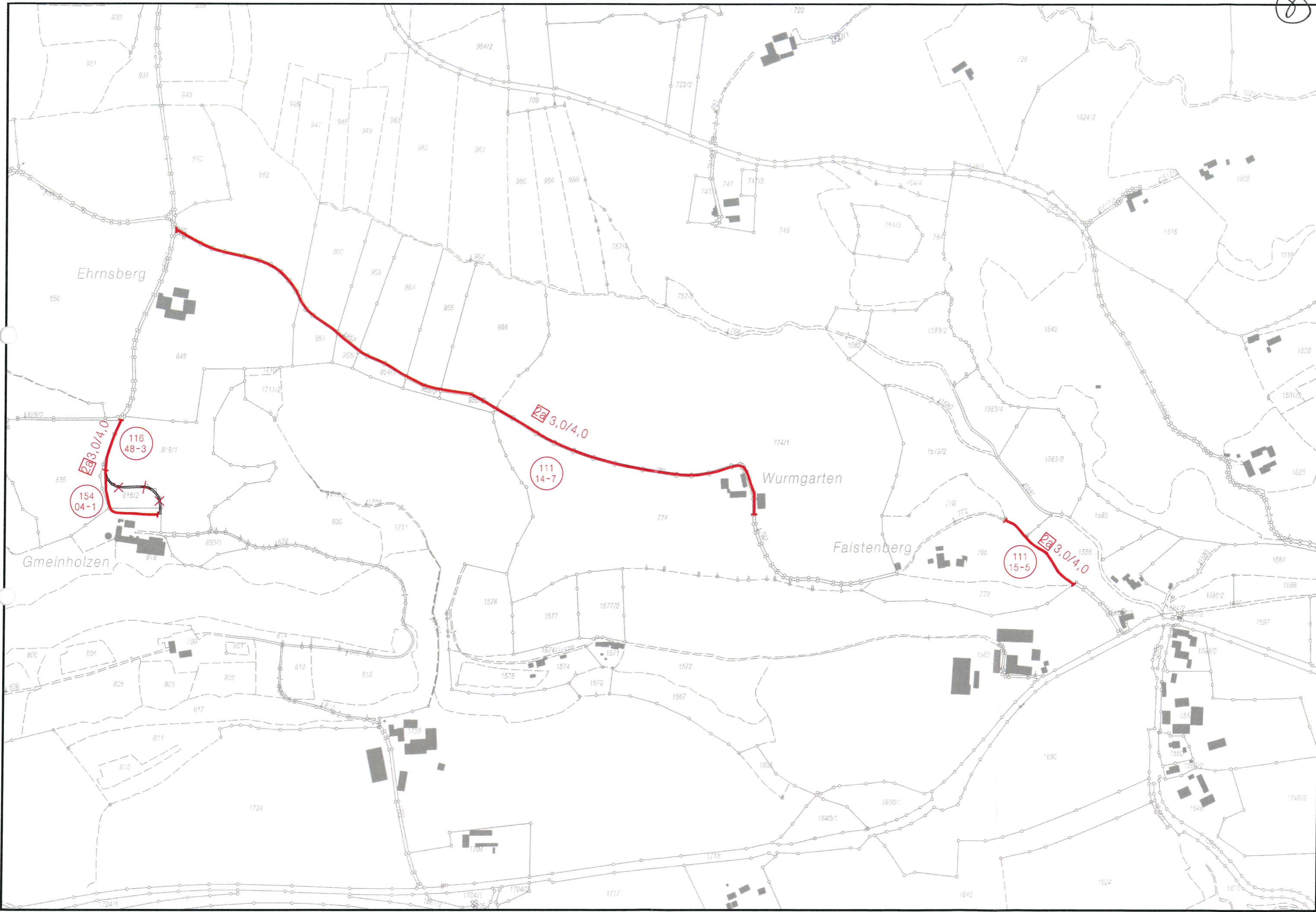


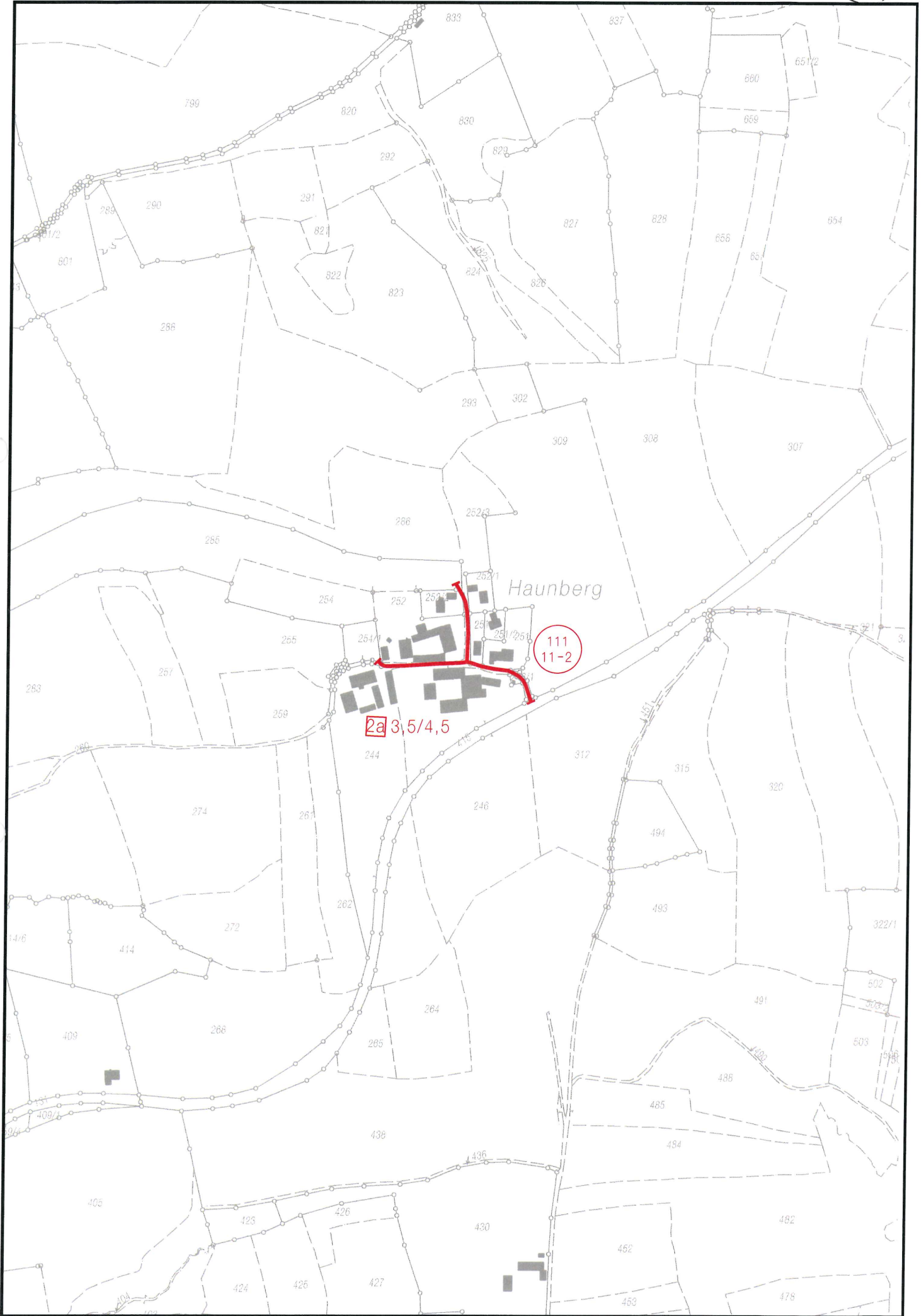


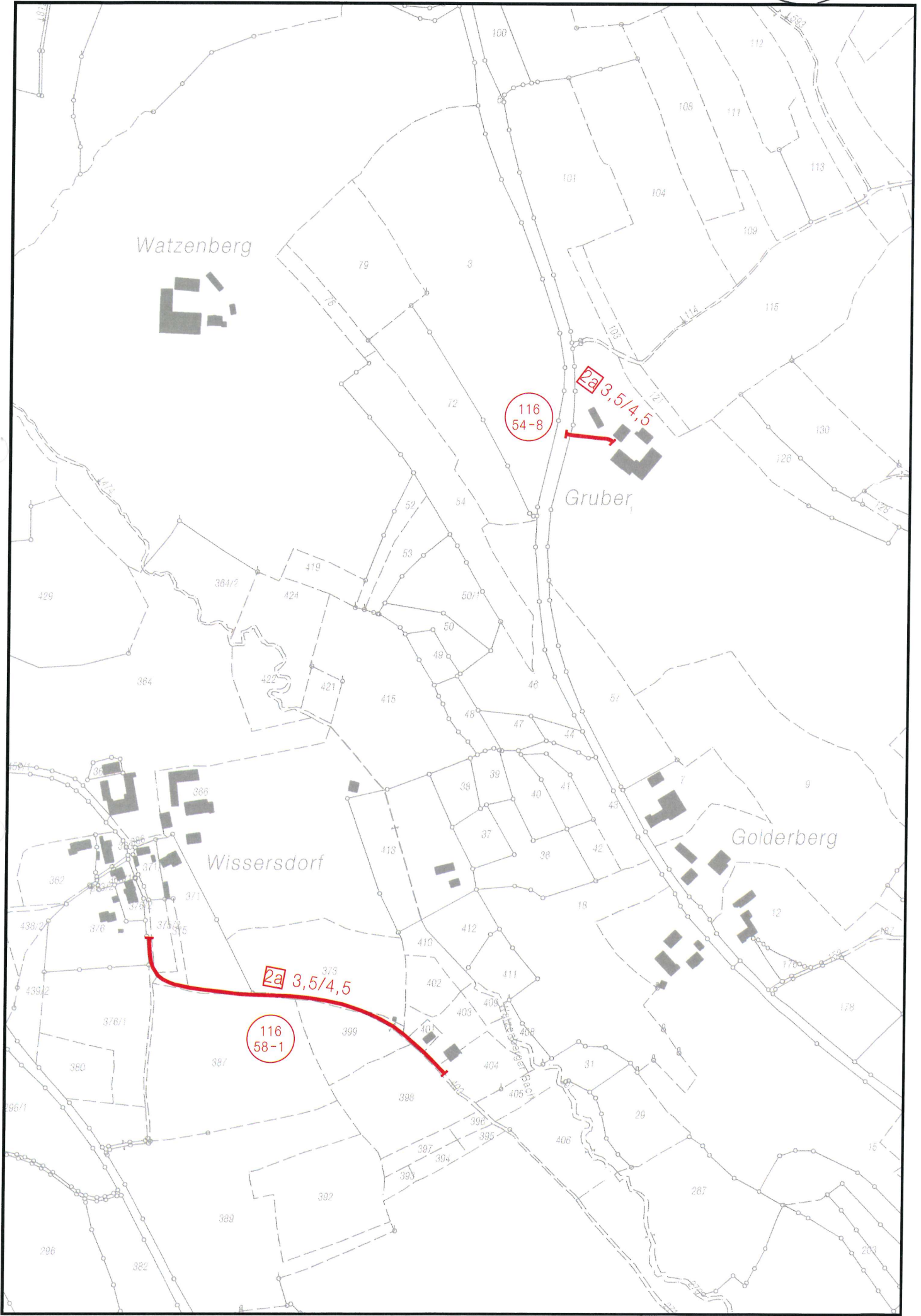




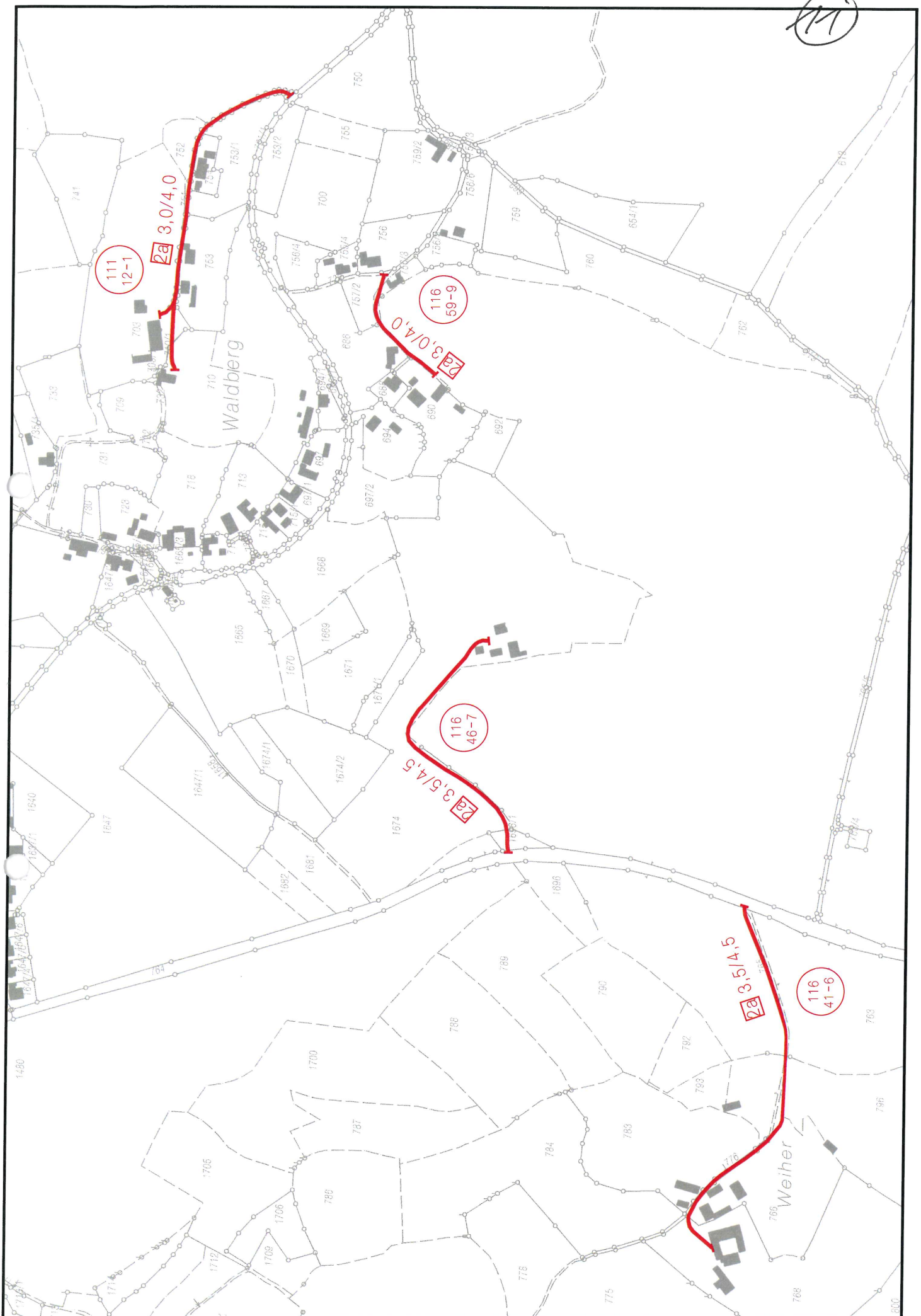








111



111
12-1

3,0/4,0

116
59-9

3,0/4,0

116
46-7

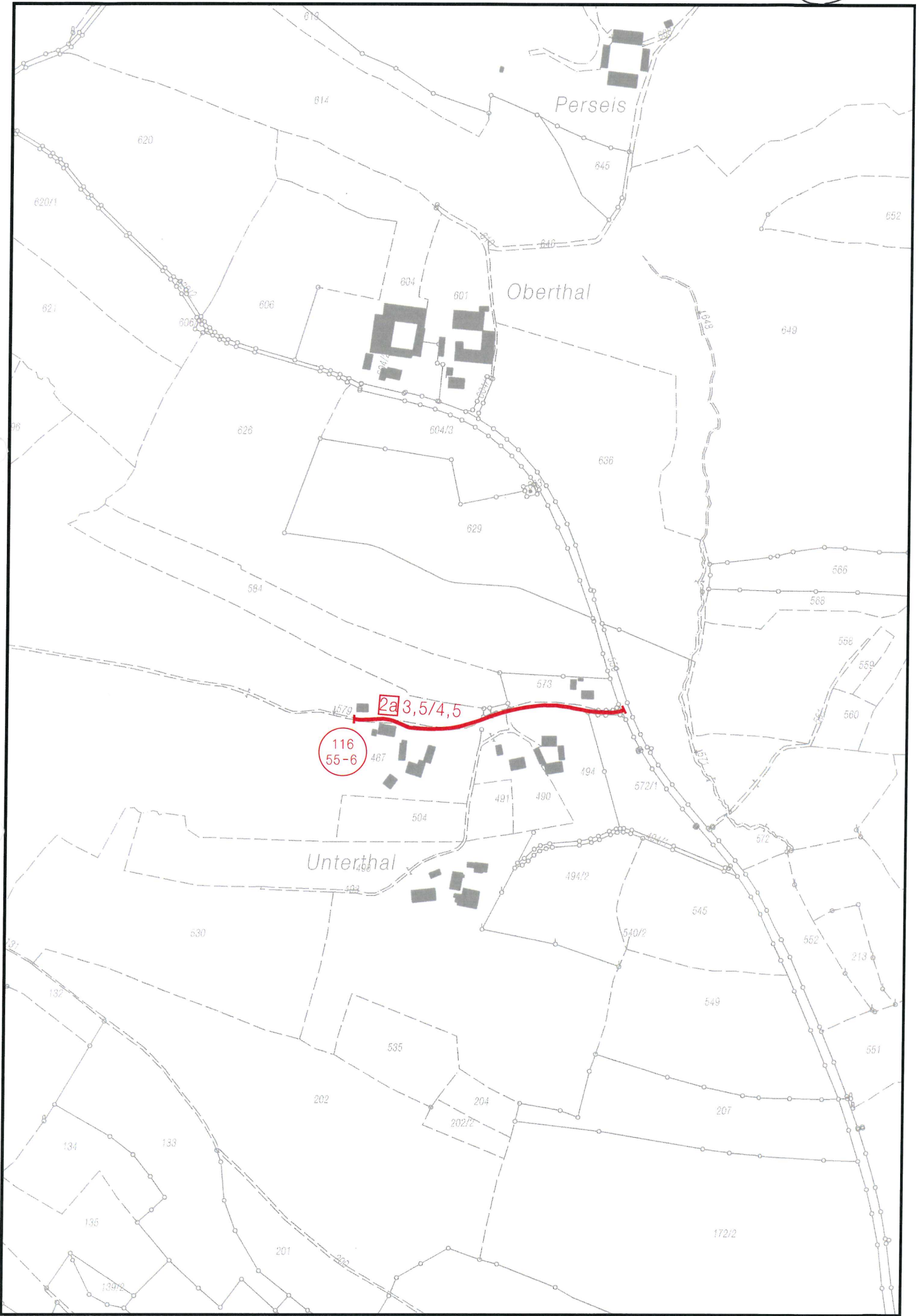
3,5/4,5

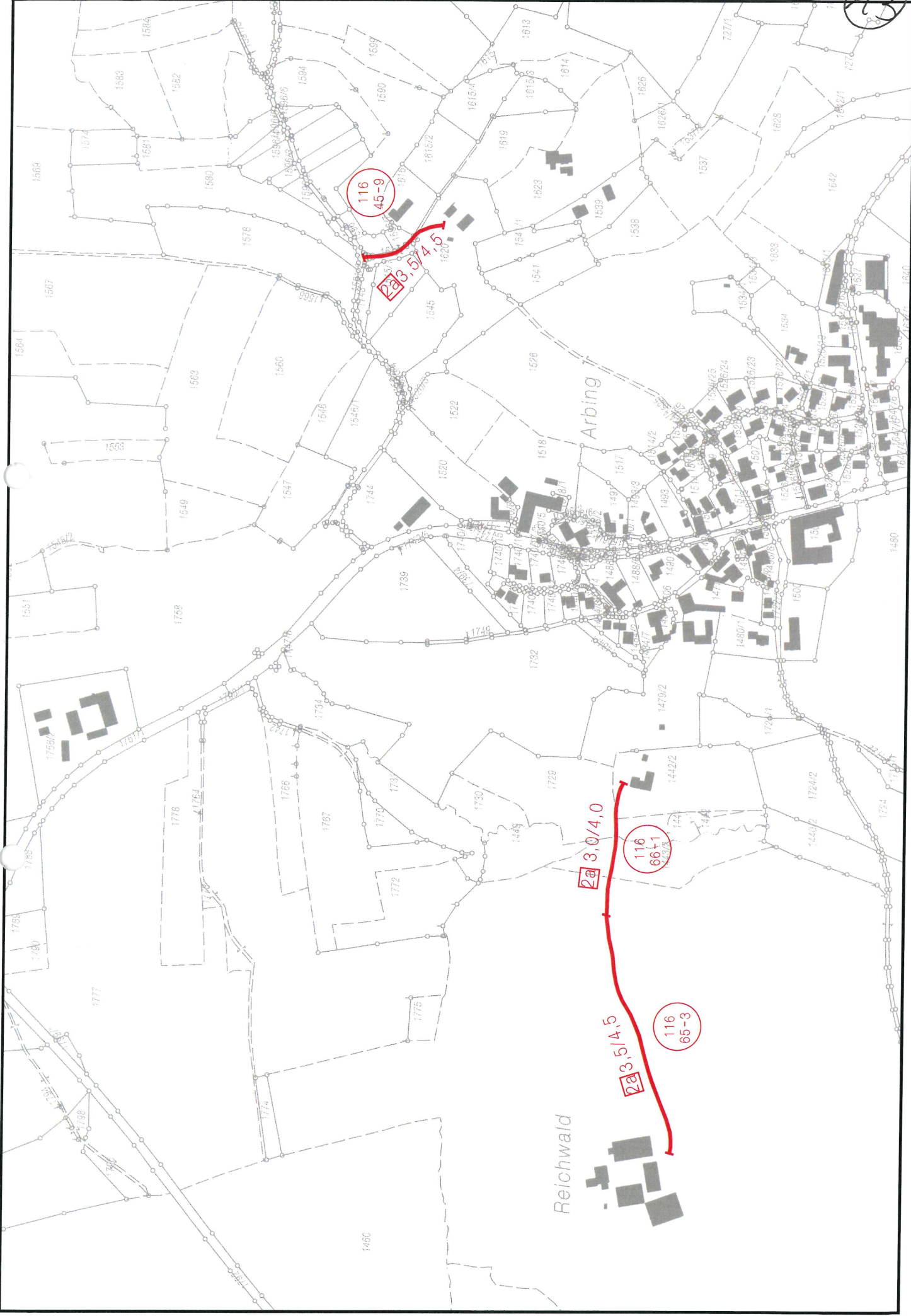
116
41-6

3,5/4,5

Waldberg

Weiber





116
45-9

2a 3,0/4,5

116
65-1

2a 3,0/4,0

116
65-3

2a 3,5/4,5

Reichswald

Arbing